

## *Pycnoporidium lobatum* from the Torinosu Limestone in the Kanto Mountains

Ryuji MORI

(Received September 30, 1988)

### Introduction

In 1926, Yabe and Toyama described the characteristic upper Jurassic calcareous algae *Pycnoporidium lobatum*. After that time the species have been reported from the Torinosu limestone exposed in many localities.

The writer collected well preserved specimens from the Torinosu limestone at Kosode, Taba-mura, Kitatsuru-gun, Yamanashi Prefecture. They are identical with type of *Pycnoporidium lobatum* Yabe and Toyama. Though the presence of *Pycnoporidium lobatum* at Kosode was formerly reported by H. Fujimoto in Japanese language with English abstract (1939)<sup>1)</sup>, this report is believed to be first note written in English for the existence of the species. The distribution of *Pycnoporidium lobatum* in Japan is also discussed in this report.

### Systematic Description

Class Rhodophyta

Family Solenoporaceae Pia, 1927

Genus *Pycnoporidium* Yabe and Toyama, 1928

*Pycnoporidium lobatum* Yabe and Toyama, 1928  
*Pycnoporidium lobatum* Yabe and Toyama, 1928<sup>2)</sup>,  
p. 146—149, pl. XX, fig. 3, pl. XXI, figs. 1—5, pl.  
XXII, fig. 1; Endo, 1961<sup>3)</sup>, p. 58, 59, pl. 1, figs. 1—  
3; Imaizumi, 1965<sup>4)</sup>, p. 54—56, pl. 9, fig. 7, pl. 10,  
figs. 1—6.

Convex or flat cross-section of thallus, numerous  
地学第2研究室

branching tubular filaments which are arranged more or less regularly and radially from the base to the surface. Filaments circular in cross-section, diameter 0.052 to 0.072 mm. No or very few partitions of filaments. The presence of a feeble trace of concentric structure (Plat I, fig. 1).

Locality; Kosode, Tabayama-mura, Kita-tsuru-gun, Yamanashi Prefecture.

Measurements of *Pycnoporidium lobatum* Yabe and Toyama, 1928

Slide No.	Thallus	Filaments	
		length	width
83002	2.437 × 2.188 mm	0.052 mm	
83004	7.820 × 2.968	0.072	
83005	10.94 × 7.20	0.679 mm	0.041
83018	6.25 × 2.128	0.618	0.052

The Distribution of *Pycnoporidium lobatum* in Japan

Most of specimens of *P. lobatum* have been reported from the Torinosu limestone exposed widely in Japan. The Torinosu limestone ranges from the Middle Jurassic to the Lower Cretaceous. The Torinosu limestone including *P. lobatum* is exposed at places from Mitoda, Kochi Prefecture to Naka-Tonbetsu-machi, Kitamino-kuni, Hokkaido. A specimen of *P. lobatum* was found in the *Yabeina shiraiwensis* zone of the Upper Permian at "Hinode" quarry, about 900m south of Hagiwara, Ofuku, Mine City Yamaguchi Prefecture by Endo

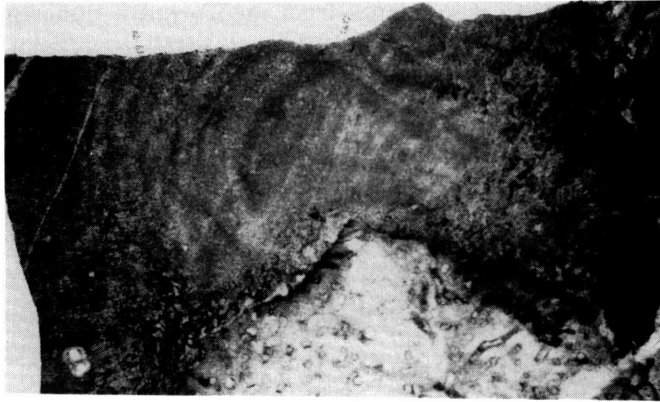


fig. 1, slide No. 83005 X 8

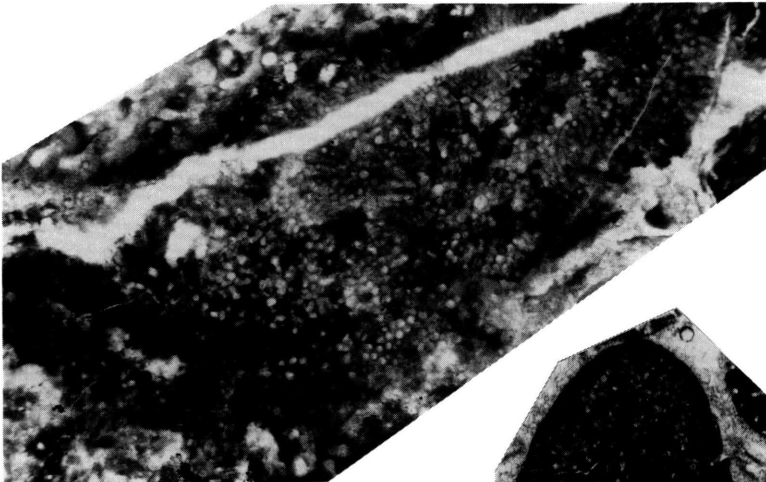


fig. 2, slide No. 83004 X 15

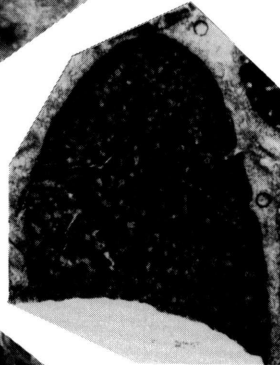


fig. 4, slide No. 83002 X 15

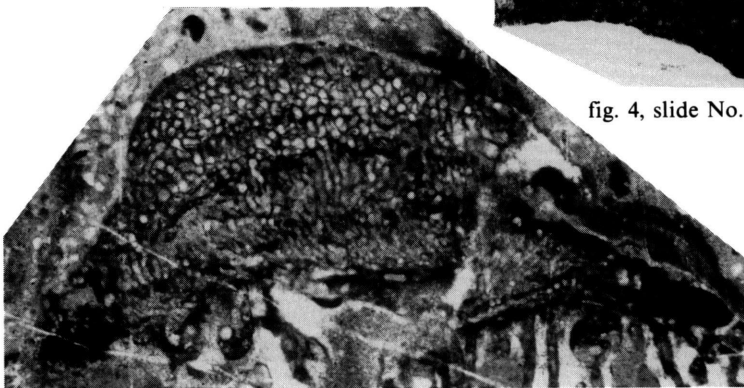


fig. 3, slide No. 83018 X 15

Explanation of plate I *Pycnporidium lobatum* Yabe and Toyama, 1928

(Endo, 1961). *P. lobatum* was found from the Torinosu limestone exposed in the Lower Cretaceous Arita Formation (Mori, 1988).

#### References

- 1) Fujimoto, H.: The Jubilee Publication in the Commemoration of Prof. H. Yabe's 60th Birthday, 457—479, 1939 (in Japanese)
- 2) Yabe, H. and Toyama, S.: Tohoku Imp. Univ., Sci. Rep., 2nd. Ser. (Geol.) **12**, 1, 141—152, 56 pls., 1928
- 3) Endo, R.: Saitama Univ., Sci. Rep., Ser. B, Endo Commemorial Volume, 58, 59, pl. 1, 1961
- 4) Imaizumi, R.: Tohoku Univ. Sci. Rept., 2nd. Ser. (Geol.) **37**, 1, 49—62, pls. 9—14, 1965
- 5) Endo, R.: Saitama Univ., Sci. Rep., Ser. B, Endo Commemorial Volume, 120—142, pls. 1—7, 1961
- 6) Mori, R.: Bulletin of Tokyo kasei Univ. **28** 57—61, pl. 1, 1988 (in Japanese)

---

#### 関東山地鳥ノ巣石灰岩の *Pycnoporidium lobatum*

森 隆二

(昭和63年9月30日受理)

山梨県北都留郡丹波山村小袖に鳥ノ巣石灰岩の小露頭があることは古くから知られている。筆者は、この露頭から比較的保存の良い石灰藻化石 *Pycnoporidium lobatum* を採集したので報告し、日本における *P. lobatum* の分布と地質時代を考察した。